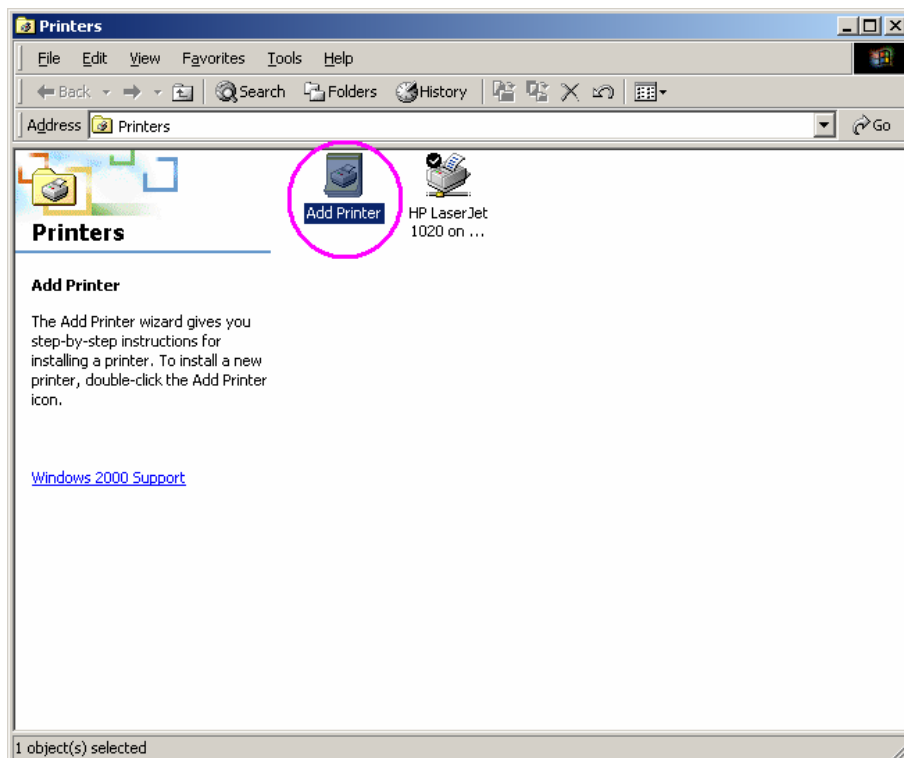
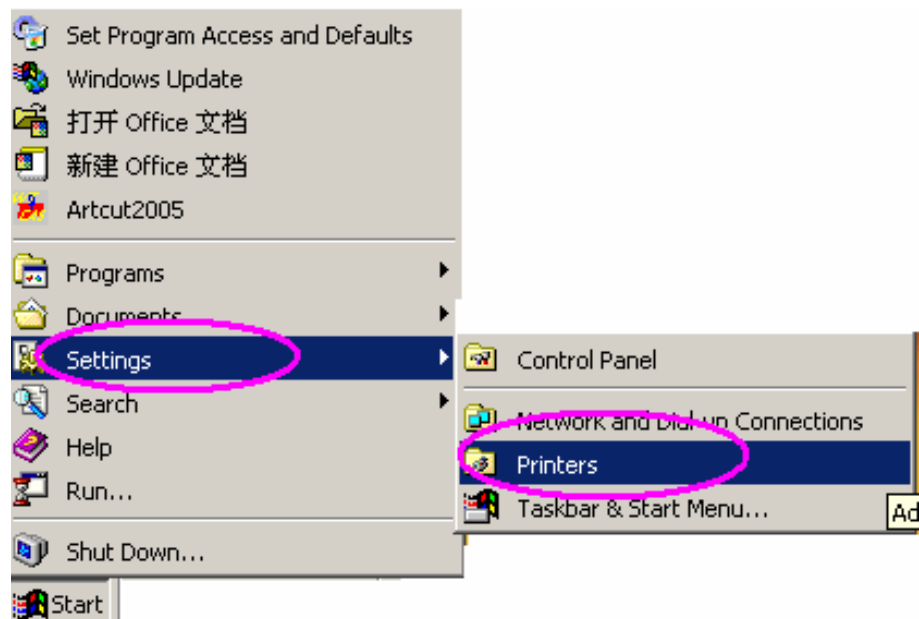


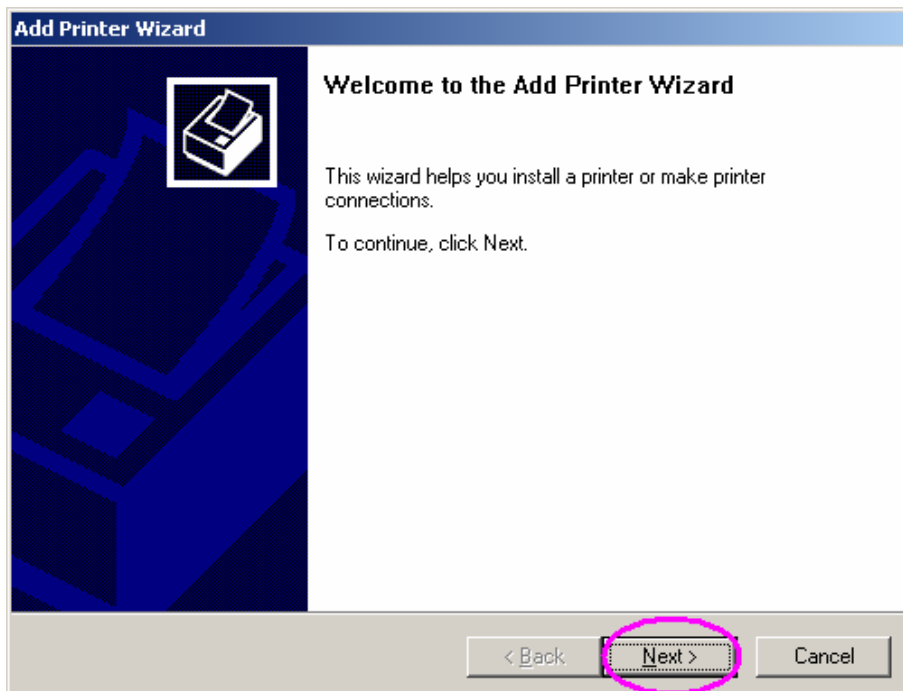
INSTRUCTION of LIYU PLOTTER DRIVER

1. LIYU CUTTING PLOTTER DRIVER SET-UP (Windows 2000 for example)

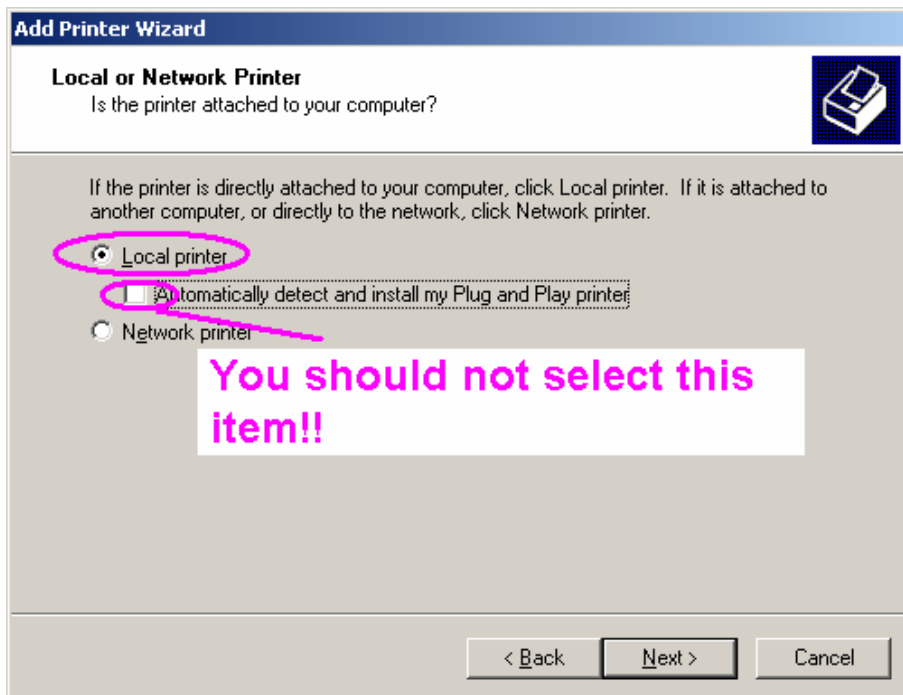
① Please select: “Start---Settings---Printers”



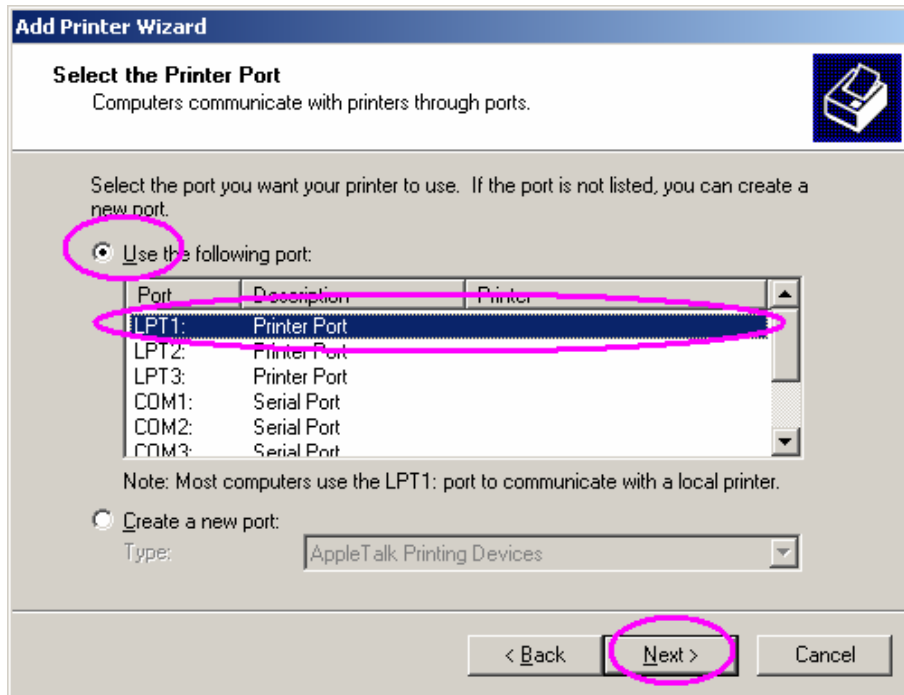
②Please select “Add printer”.



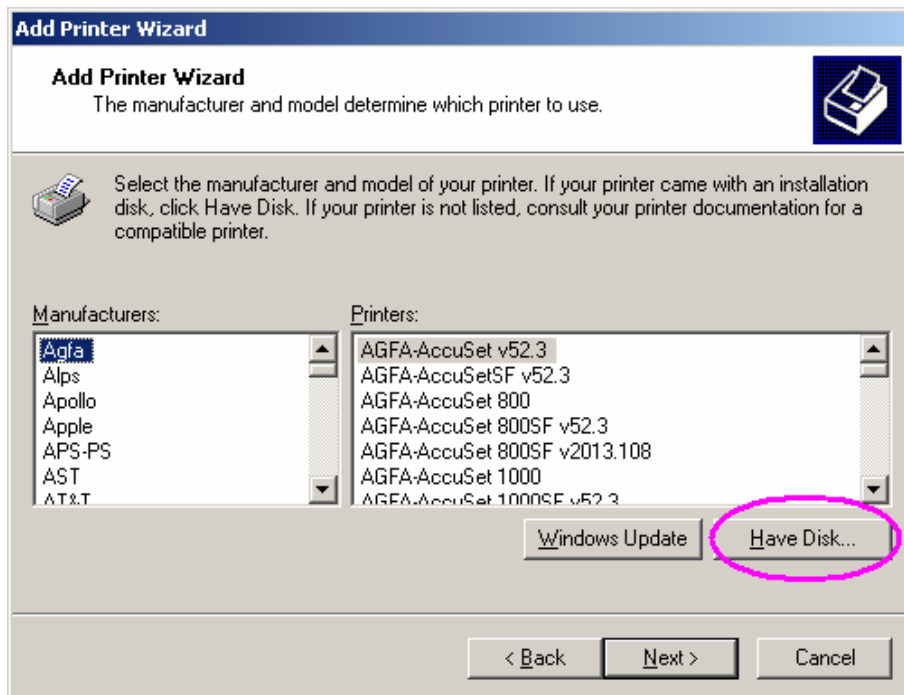
③You should choose “Next”



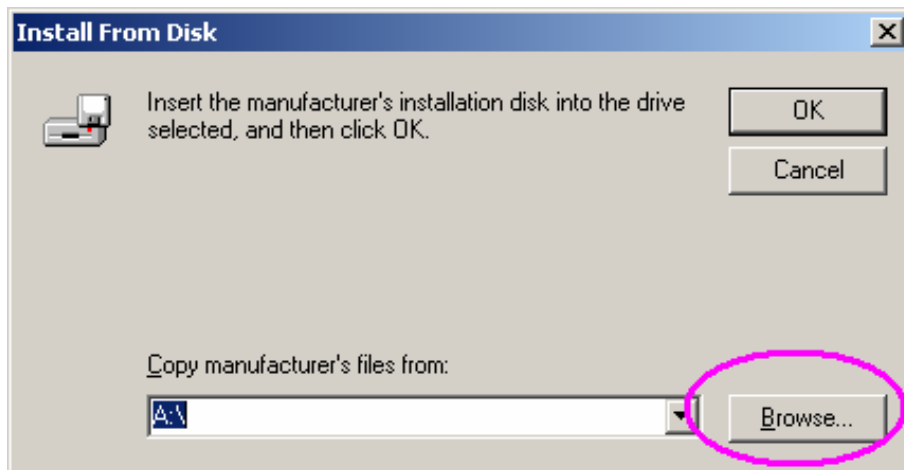
④You should choose “Local printer” and then, select “Next”



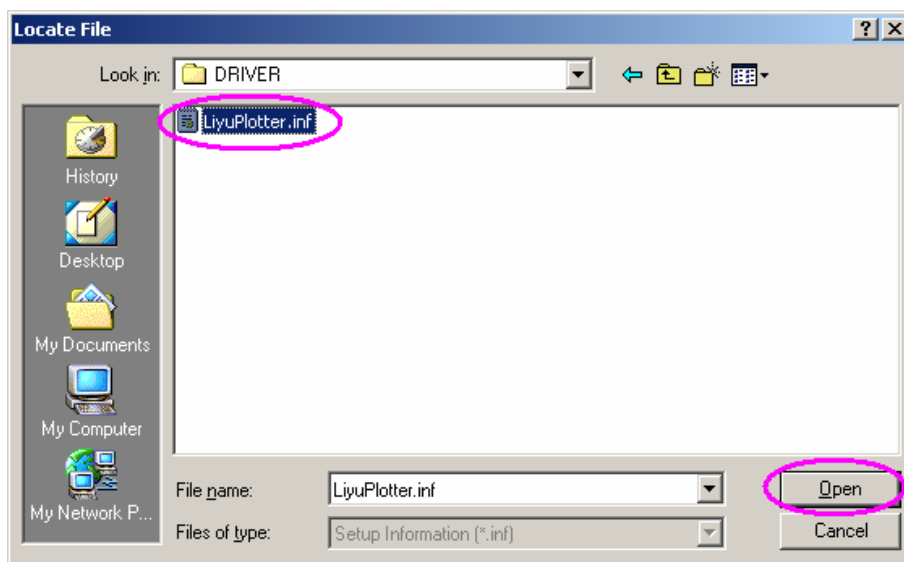
- ⑤ You should choose the port which your cutting plotter are using, then, select “Next”.



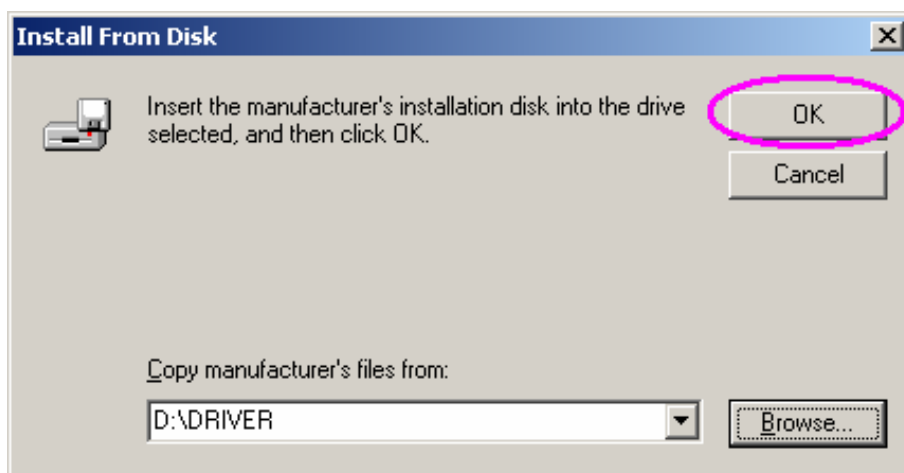
- ⑥ Select “Have Disk”



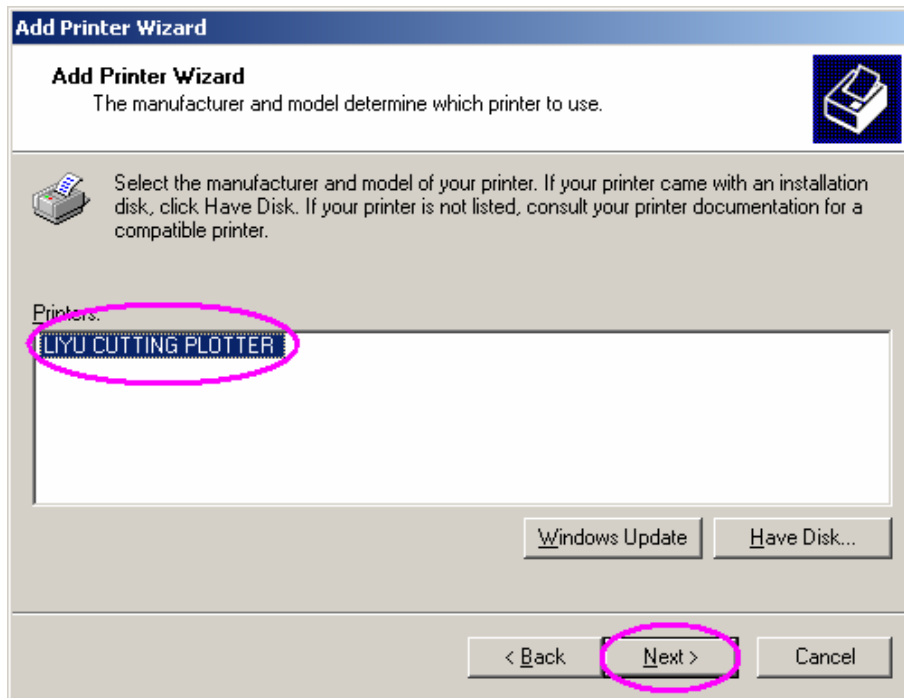
⑦ Select “Browse”



⑧ Find “Liyuplotter.inf” file, then, select “Open”

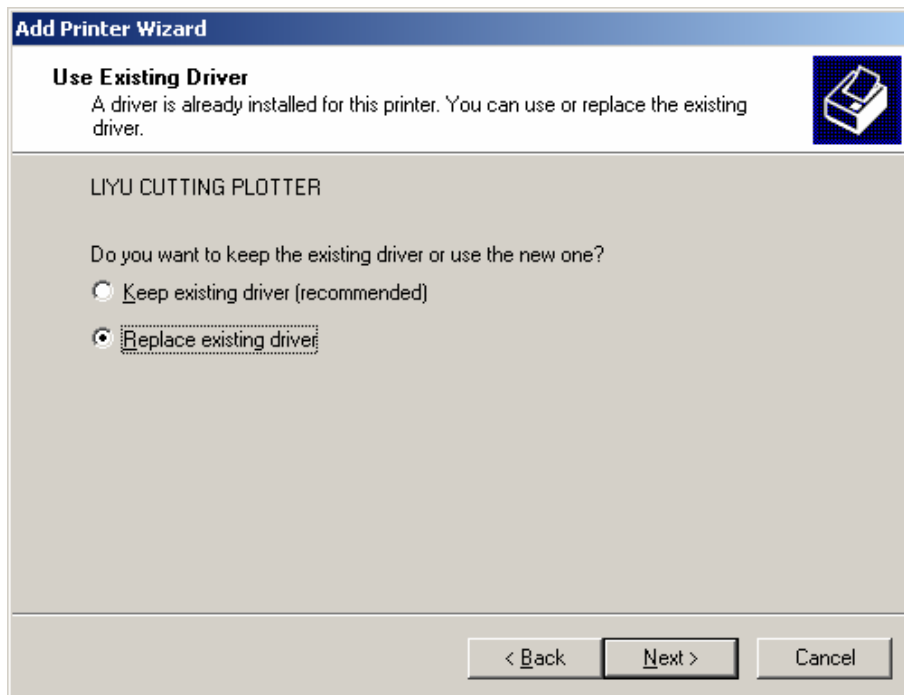


⑨ Select “OK”

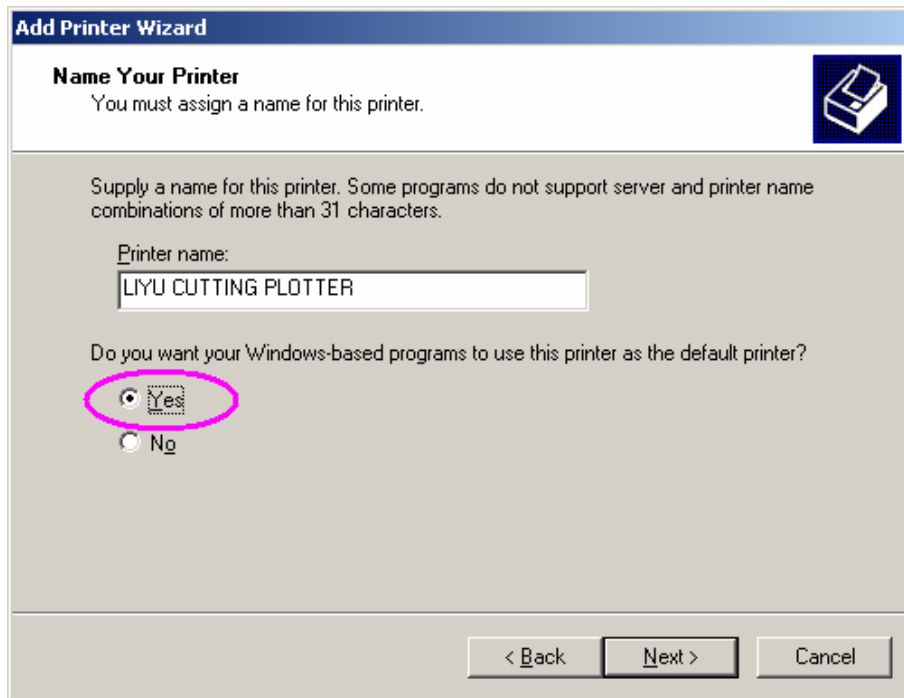


⑩ You should find: **LIYU CUTTING PLOTTER**, then, select “Next”

【Note】 If you have installed this plotter driver before, you should find following Reminding:

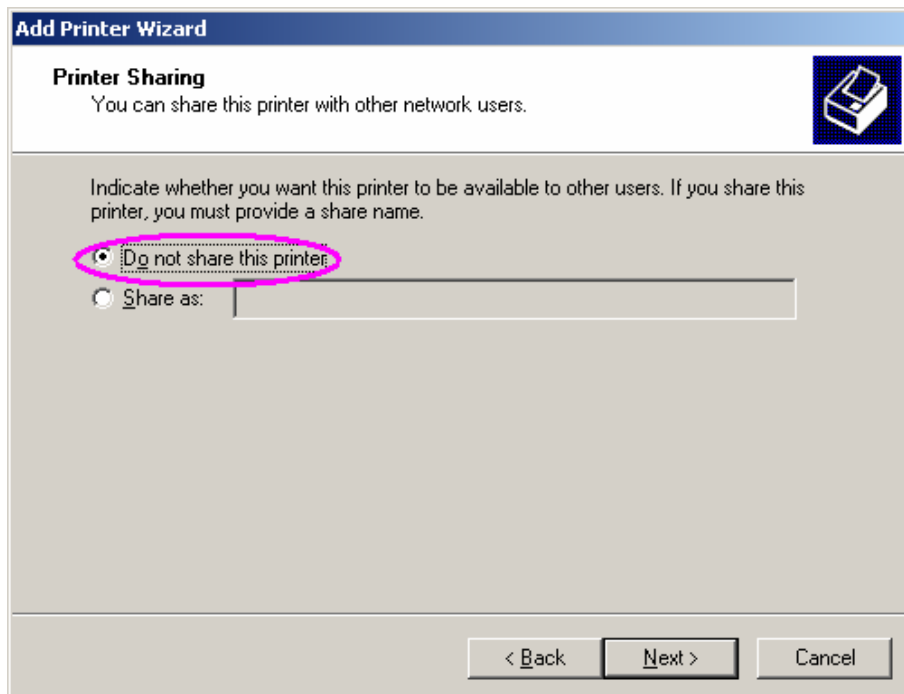


⑪ Please choose: “Replace existing driver”.

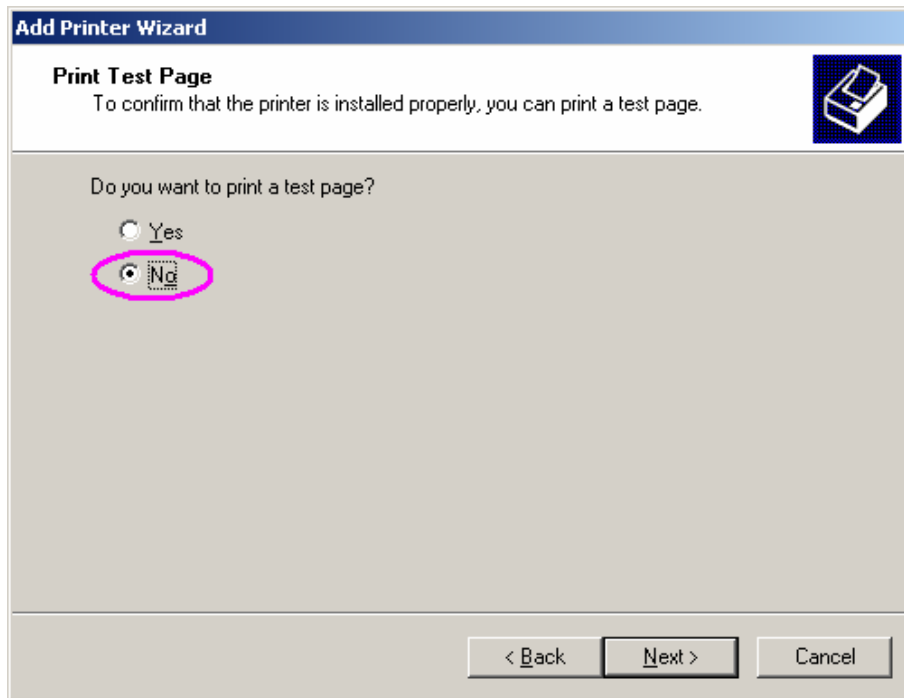


- ⑫ If you want to use this printer as the default printer, please choose “Yes”, then select “next”.

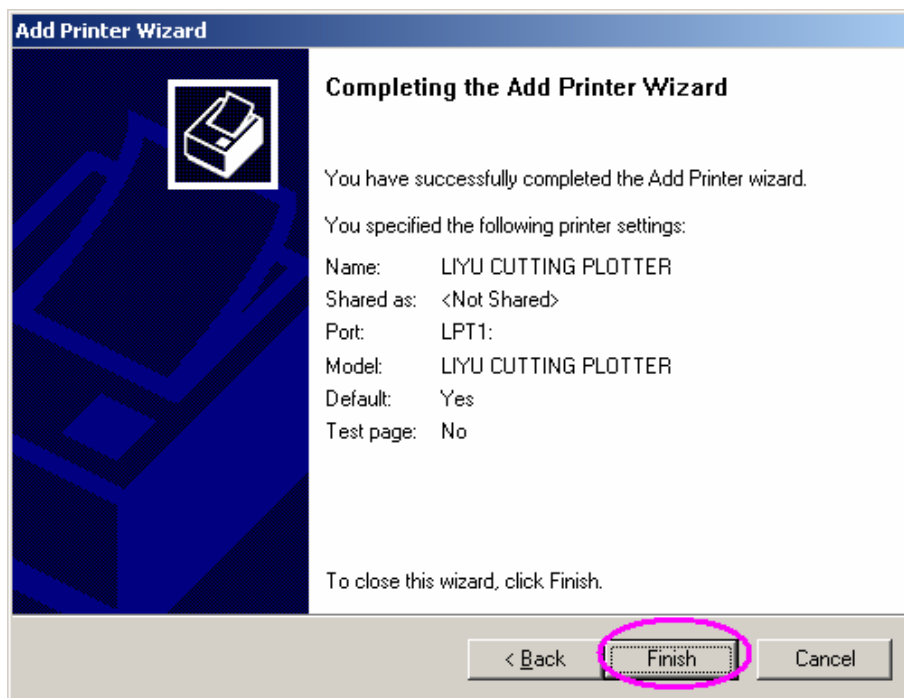
【Note】 You should not find this reminding if there is no other printer.



- ⑬ Select “Do not share this printer”, then, Select “Next”

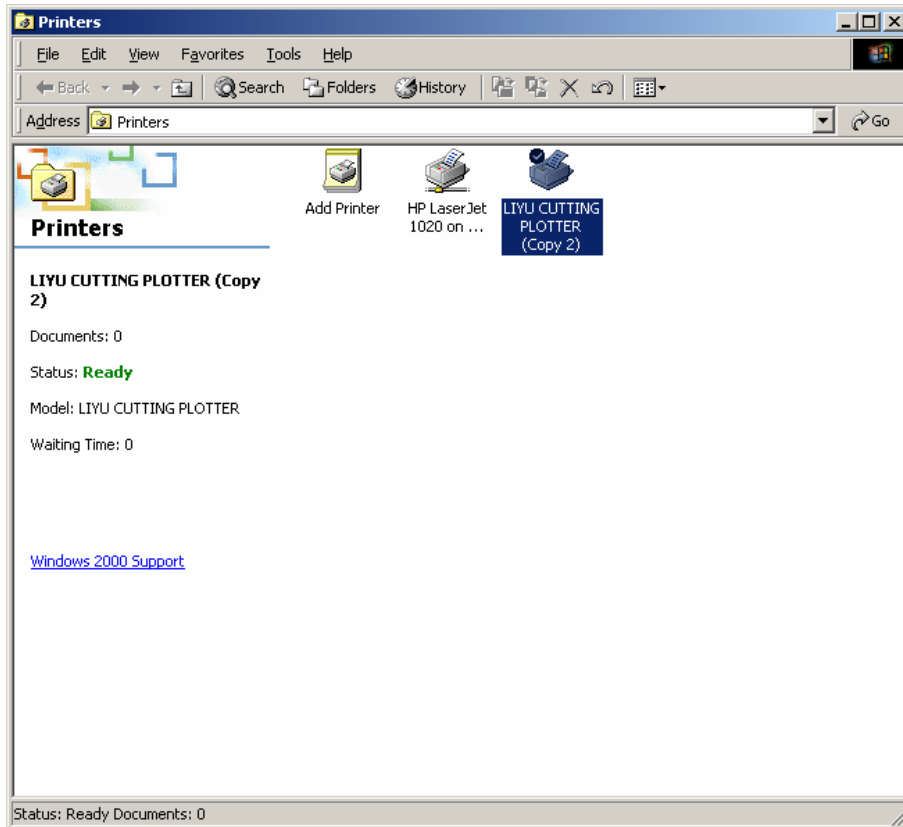


⑭ Select "No", then, "Next"



⑮ Select "Finish".

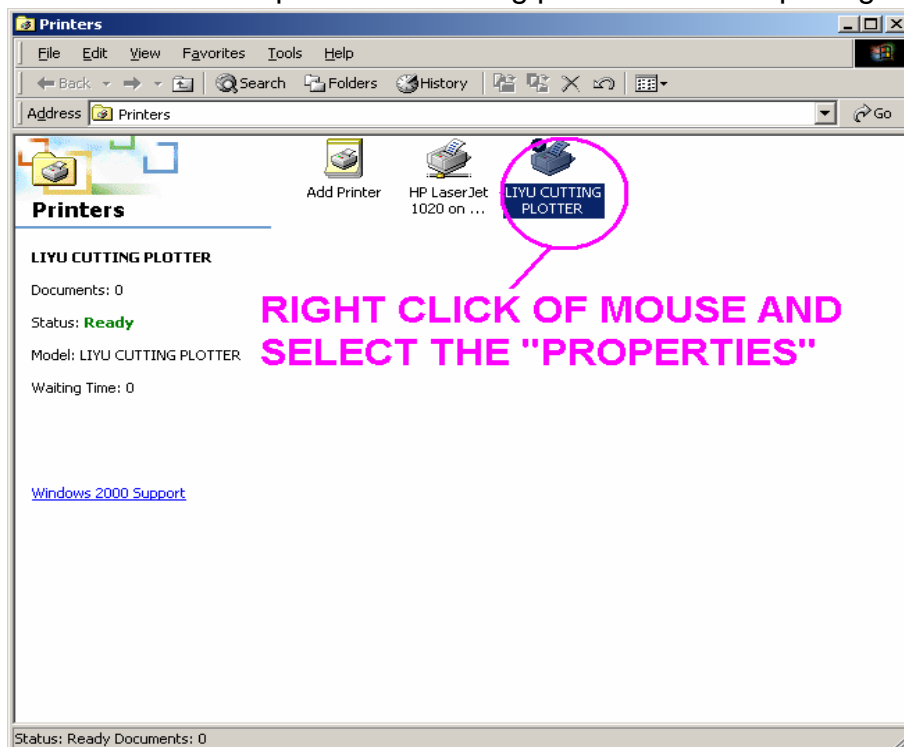
Please always select "Still installing" if there is any interface reminding you during installation.



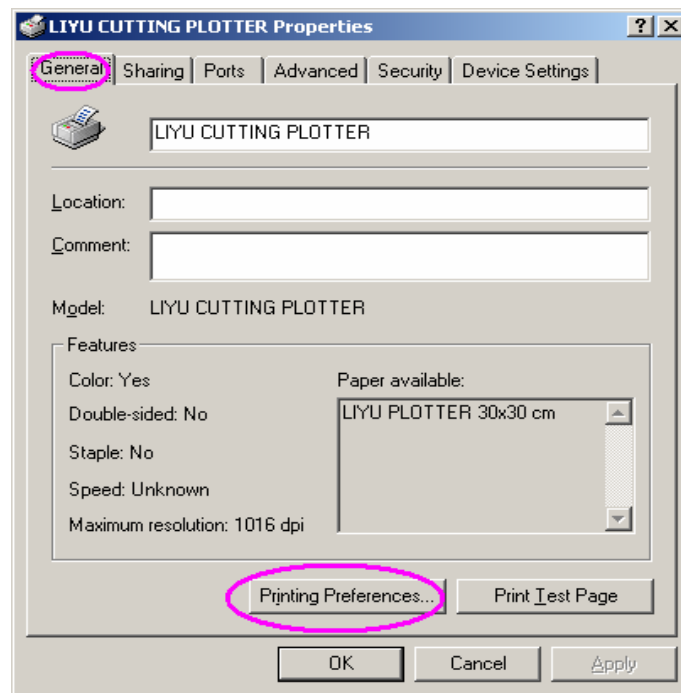
- ⑩ You should find **LIYU CUTTING PLOTTER** at the end of installation.

2. PLOTTER SETUP

You should make some setup on LIYU Cutting plotter before outputting.

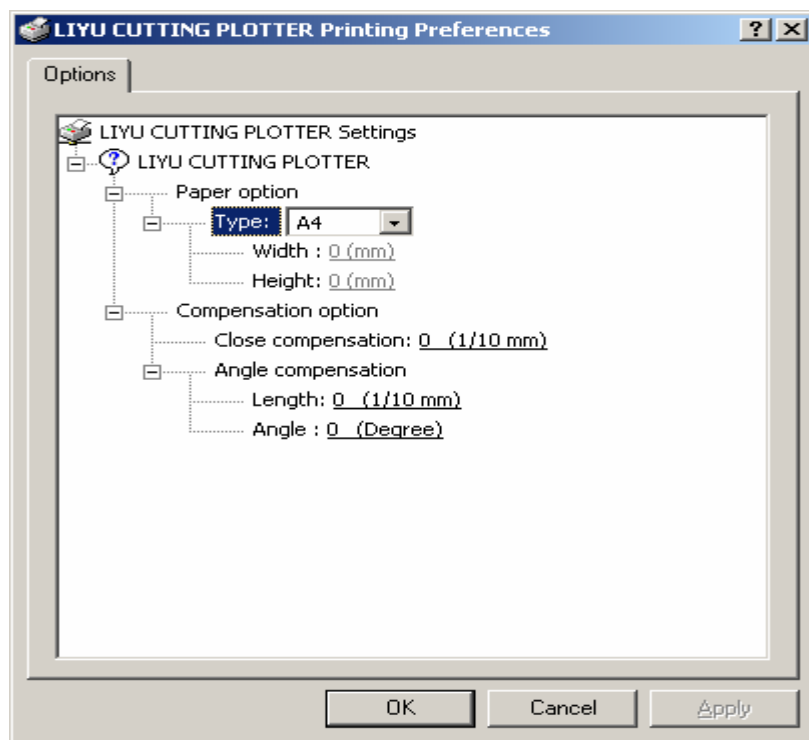


You need to make some setting on “General” and “Ports” items.



2.1. General SetUp

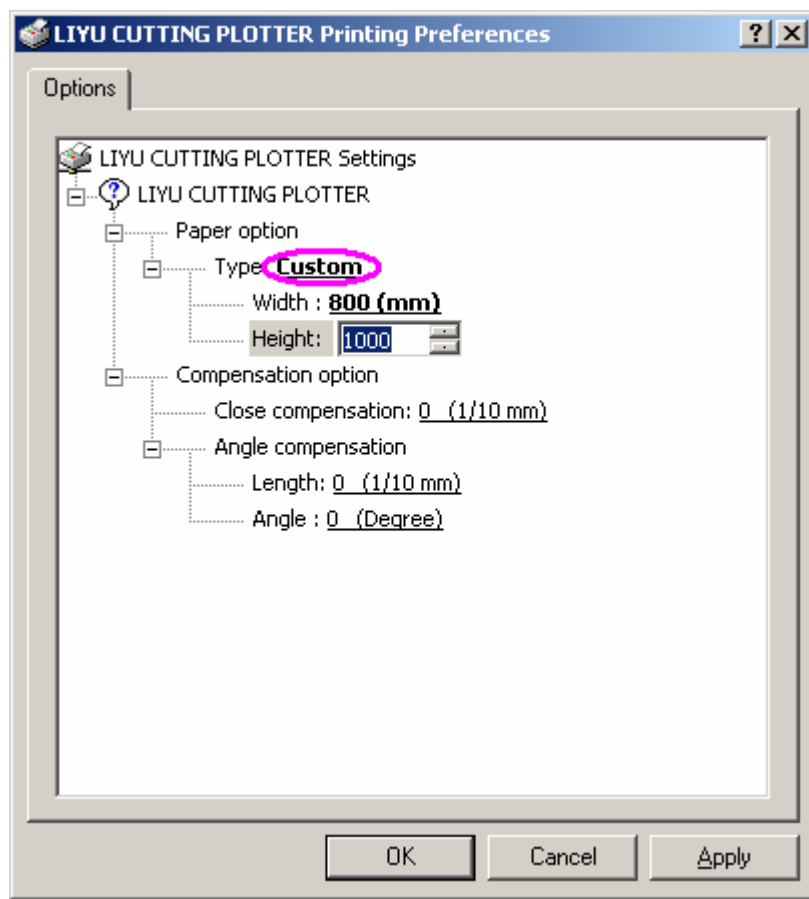
In “General” item, please click on “Printing Preferences”, you should find following interface at which we need to make some setting on “Paper option” and “Compensation option”.



Explanation for each item on this interface:**2.1.1. Paper option:**

Set paper size, you can select the popular paper type from the listed options, or, you can select “Custom”, and set paper height and width at your request.

Please set paper size according plotter cutting size and output medium size. It is better to set its value more than 10mm and less than 20000mm. We advice the optimum value should be set **between 300mm and 3000mm**.



【Note】You should set the paper size according to your plotter cutting size as well as media size in order to avoid exceed cutting out of media scope.

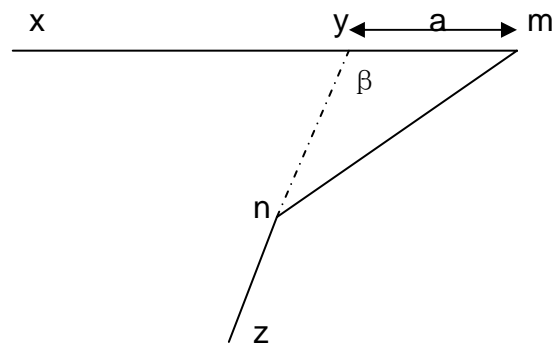
2.1.2. Compensation options:

- **Close compensation:** After the machine finish one section of closed curves, it will send commands to blade and continue to revolve this closed curve to

cut a bit of, thus guarantee the curve closed completely. The length unit for Closed Compensates is **1/10 mm**, please do not set the value of CLOSE COMPENSATION too large which cause time waste in the cutting process.

- **Angle compensation:** Because of blade physical structure, the angle cannot cut very sharply thus effect the graph overall appearance, Angle compensation is set for better actual angle cut as sharp as it displays in Graph.

See as below Sketch Map:



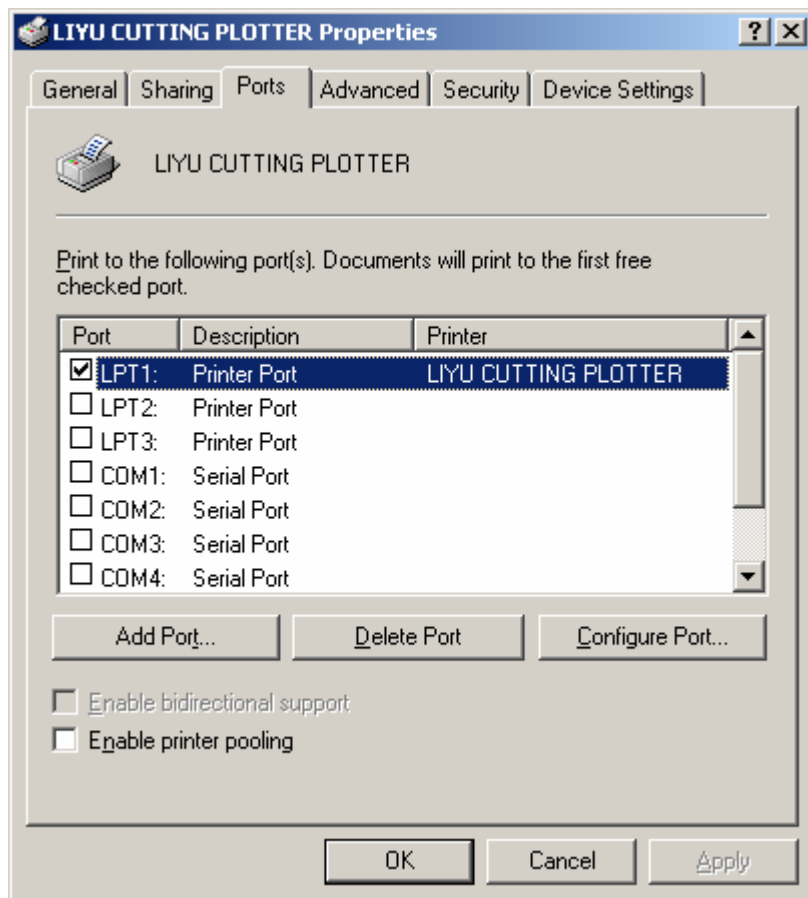
(Re: how Angle Compensation works)

From the above map, the curve will go by X, passes through Y arrives Z. By the setting of angle compensation, machine will go from X to M, via N, then arrive Z. Therefore, it makes the angle formed by XYZ to be sharper than original in order to compensate the imperfect on angle cut caused by blade itself.

Herein, “a” is compensate length, “ β ” is Compensate angle, if β is not more than the value set by you, the angle compensation will come into effect of the actual cutting. The length unit for Angle compensate is “1/10 mm”, angle unit is “degree”, You can set this compensation value at actual demand, otherwise it will distort the graph and effect the overall cutting quality.

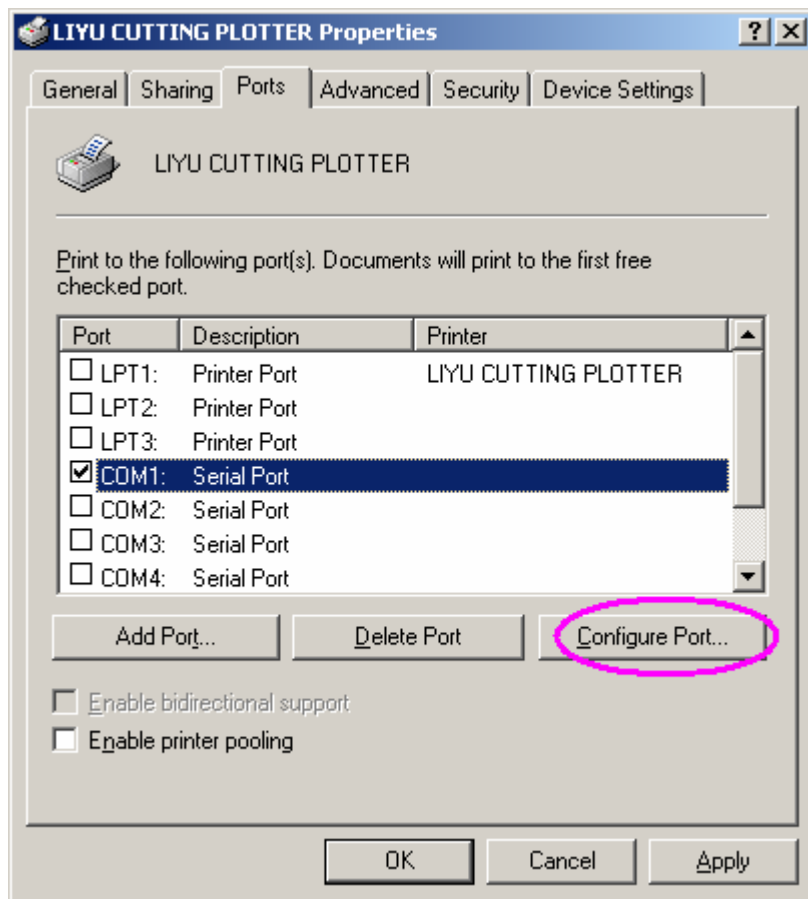
【Note】

Unit for both Close compensation and the length of Angle compensation is 0.1mm, Close compensation value: 3, length of Angle compensation: 2, compensation angle: 120, is recommended by us. Of course you can adjust these values according the actual situation to obtain best result.

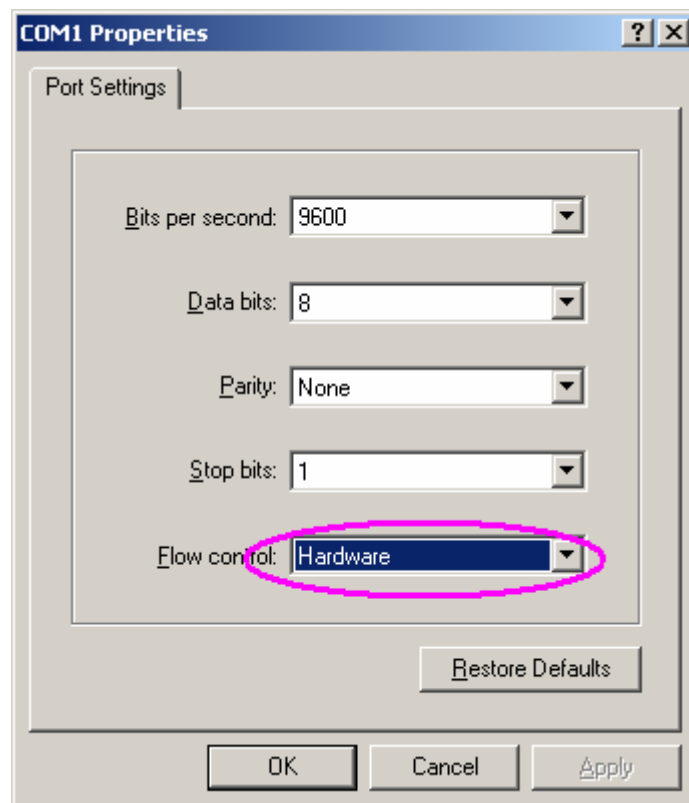
2.2. PORT SetUp

Please choose LPT1: Printer port if the plotter connect to computer parallel port, otherwise you can choose COM for Serial port.

Here for example of COM1, please select COM1:Serial Port then click on "Configure port",



Please Set COM1 Properties as following:

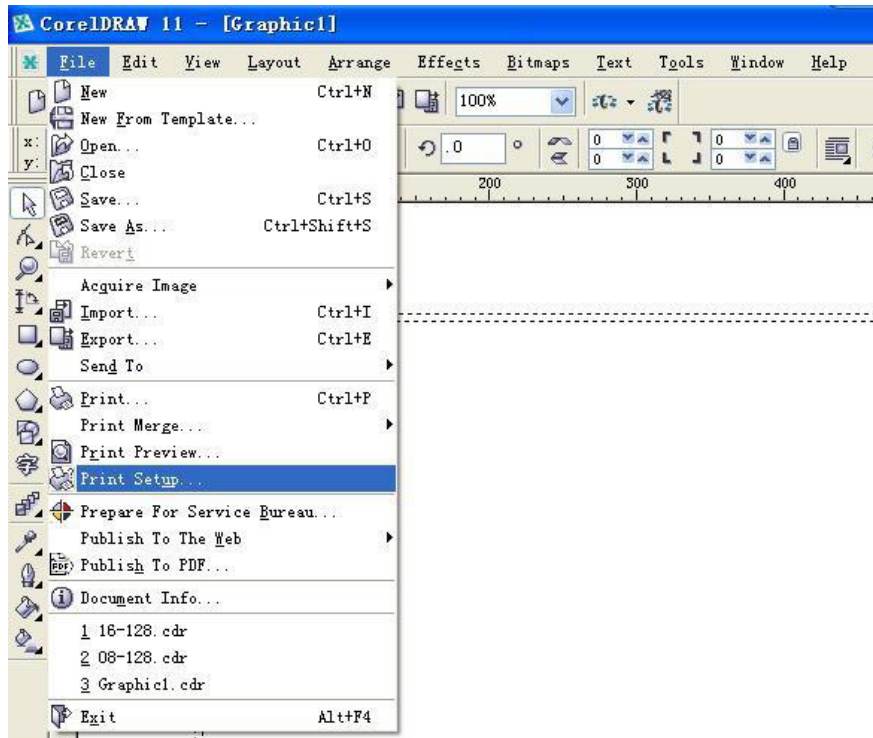


3. ATTENTION

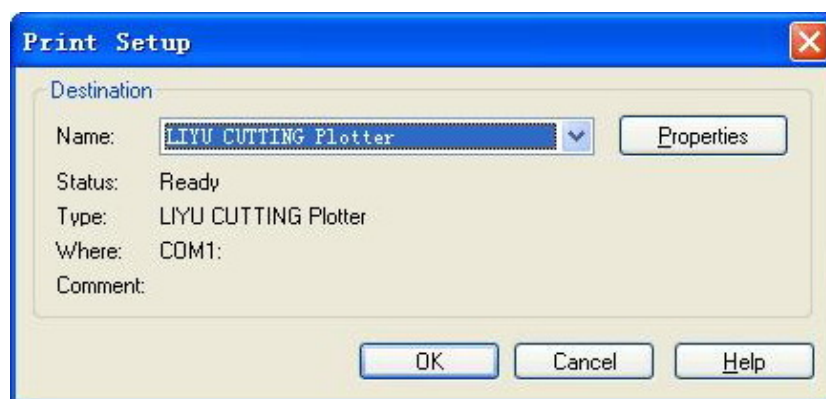
1. If you choose the paper type to be “Custom”, please set its size according your plotter cutting size, paper width and height. Our advice is set between 300mm and 3000mm
2. The unit of Close compensation and Angle Compensation length is 0.1mm, our advice is Close compensation:3, Angle compensation Length: 2, Angle: 120degree. Also you can adjust these values according its cutting in order to get satisfying result.
3. When you edit by any Design Software, please set its layout size to be the same as the paper size value set under **Printing Preferences**, so that you can adjust the graph layout on the media more conveniently.
4. Before printout, you'd better “Print preview” the image layout on the paper in case of improper cutting work. You can adjust image's position to make sure it to be at Top Left Corner on the page.
5. If you edit by some special Design software and can print out directly to the plotter even without our Print driver, you should not install this driver in your computer; If you have installed the driver already, please try to use parallel port (LPT) otherwise it will cause print failure. Then output the work from File menu “File--Print”.

4. Application

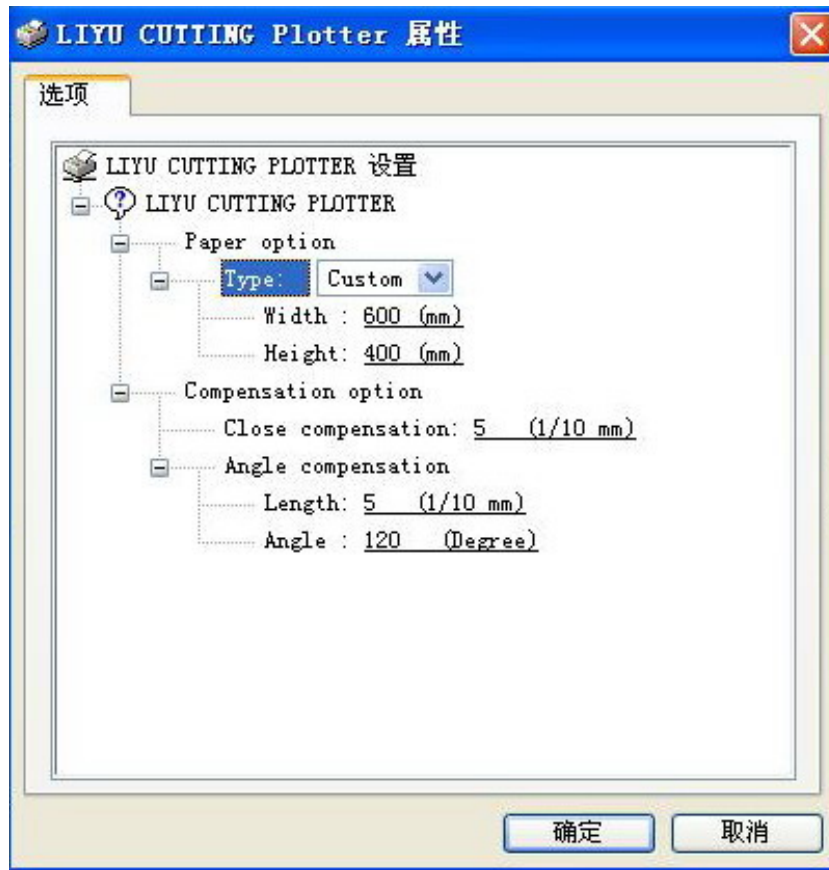
4.1 CorelDRAW



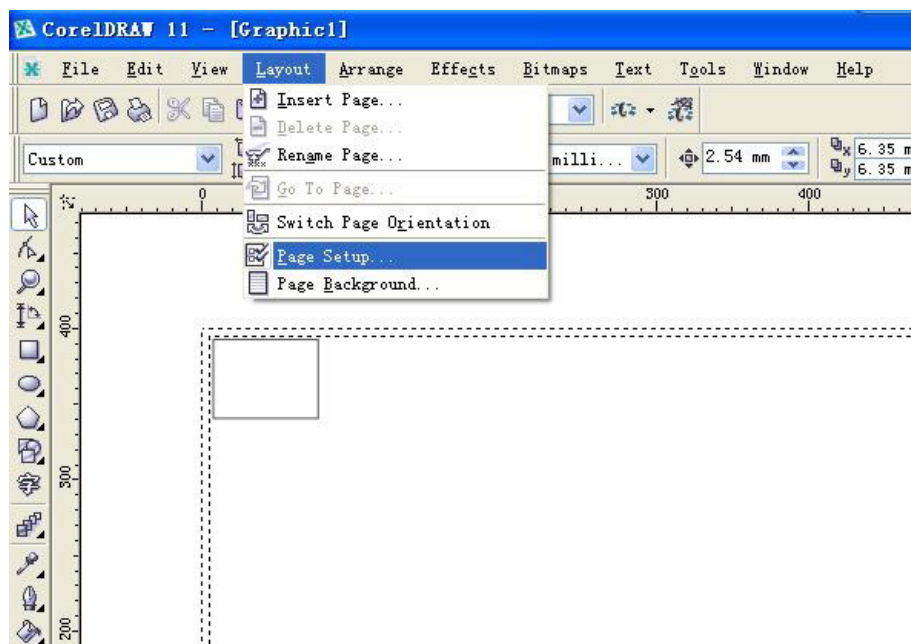
Select **“File—Print Setup”**



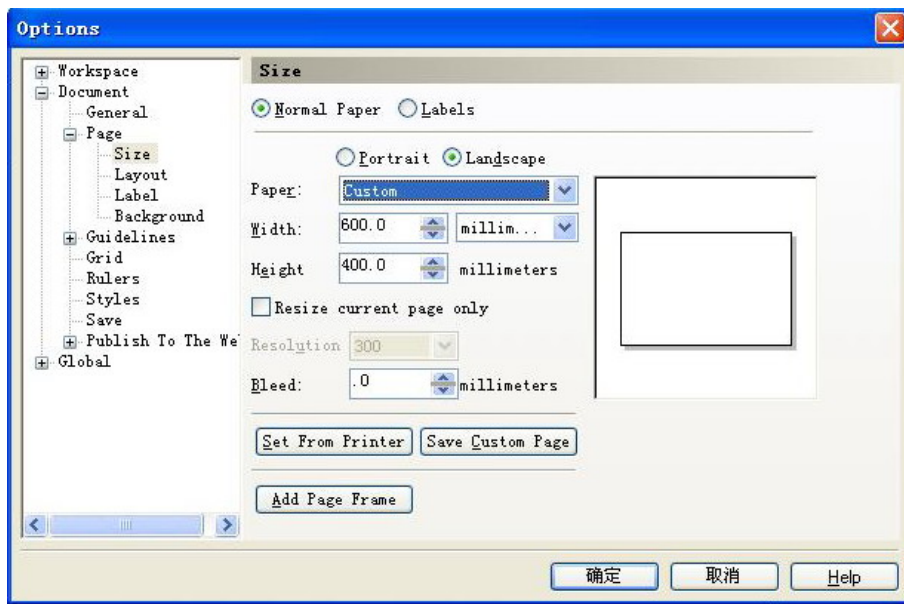
Click on **“Properties”**.



【NOTE】 The values on above should be the same as your setup on foresaid item 2.1 Printing Preferences if you have made. But you also can adjust its value at your actual request.

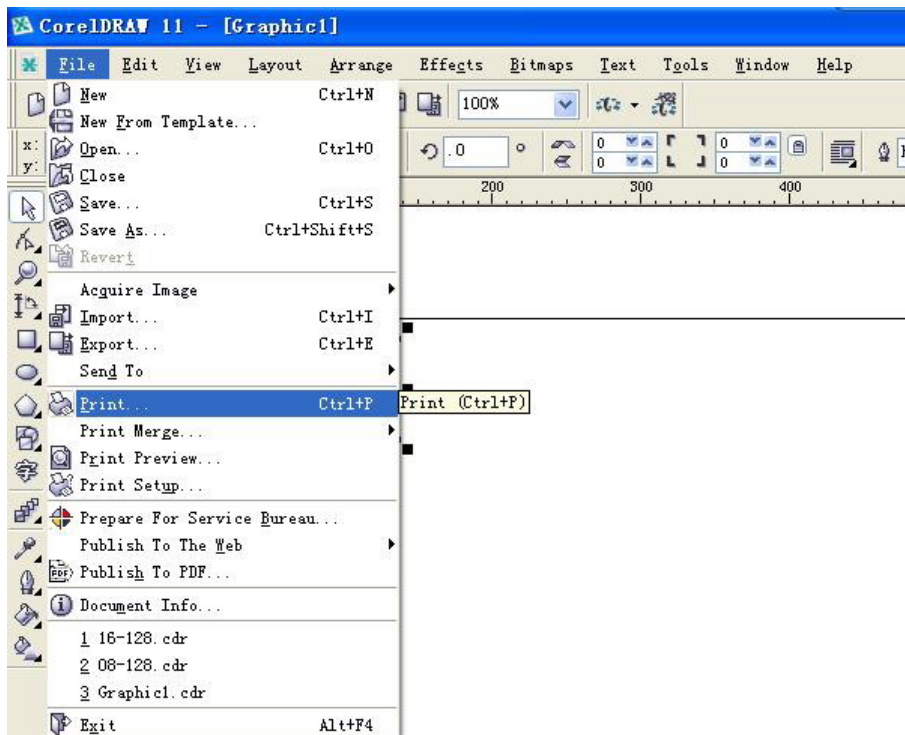


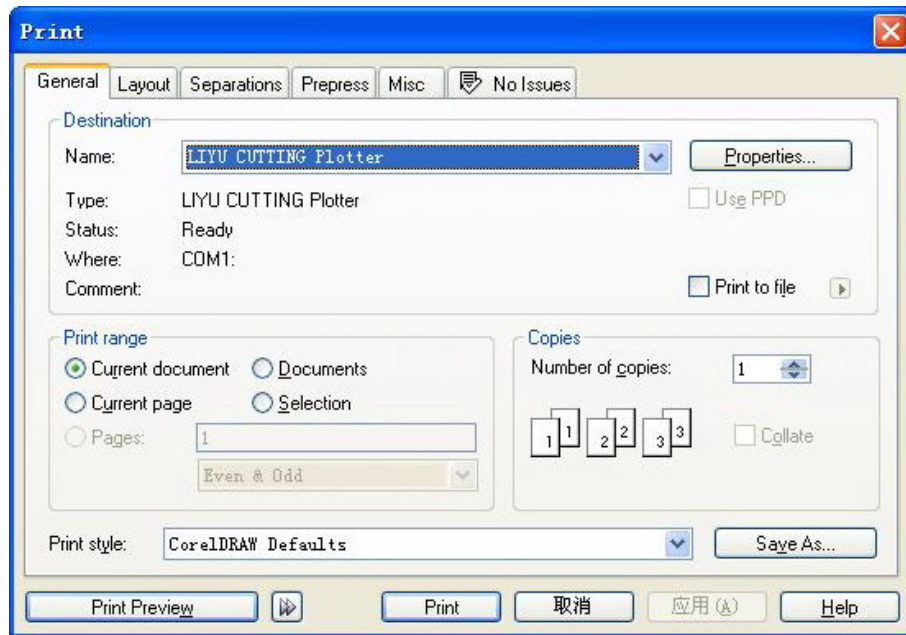
Select “[Layout—Page setup](#)” to enter below page setup interface.



Please set the paper width and height herein to be the same with the values in [Print properties](#) to ensure the coherence between design and print.

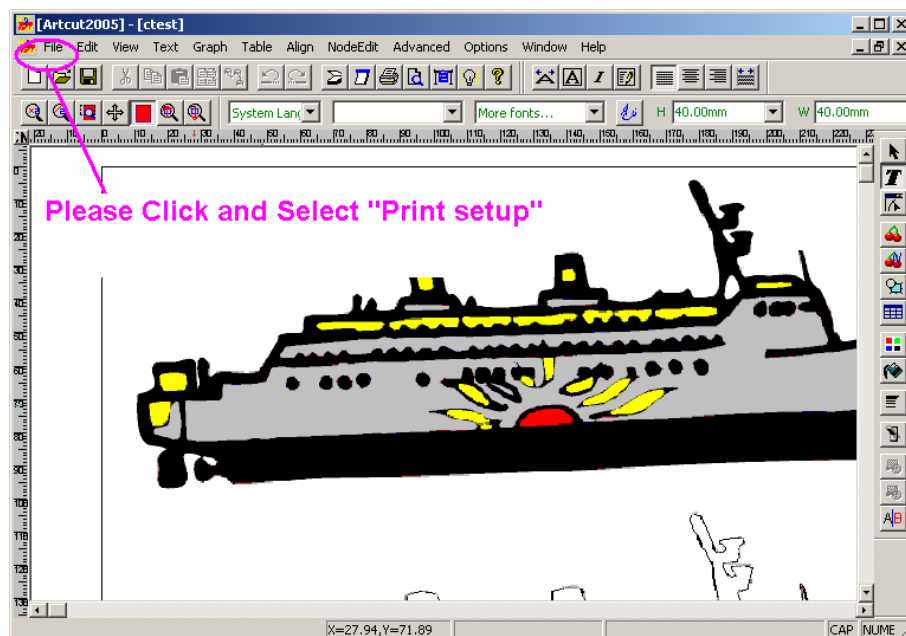
Please select [File—Print](#) after edit in CorelDRAW.



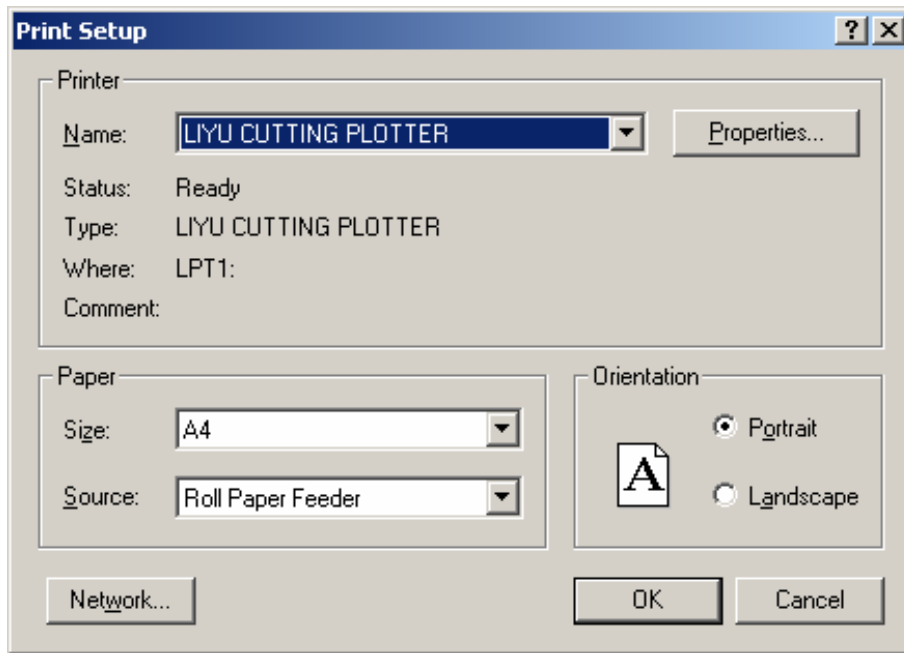


You can set up on output options on above, as well set or change Print Properties by click on “**Properties**” Then “**Print**”, then the machine will start to work.

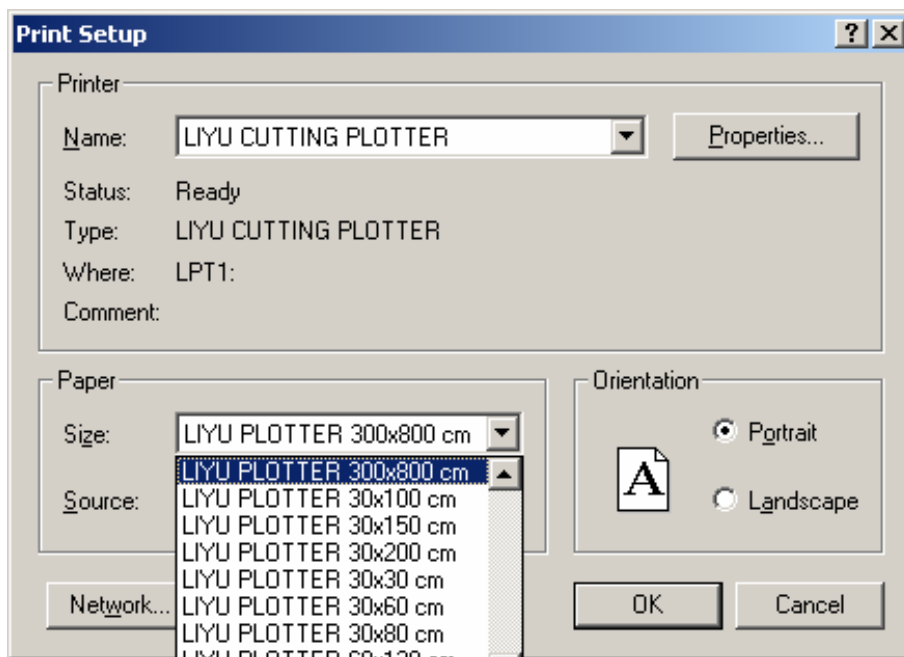
4.2. Art-cut software



Select “**Print—Setup**” to get into Print Setup interface as below.



Please select LIYU CUTTING PLOTTER from the listed device, then click on [“Properties”](#).



【NOTE】 Some software in Vector can not distinguish the paper size completely custom. Herein you can select some popular paper size for LIYU plotter at your demand.